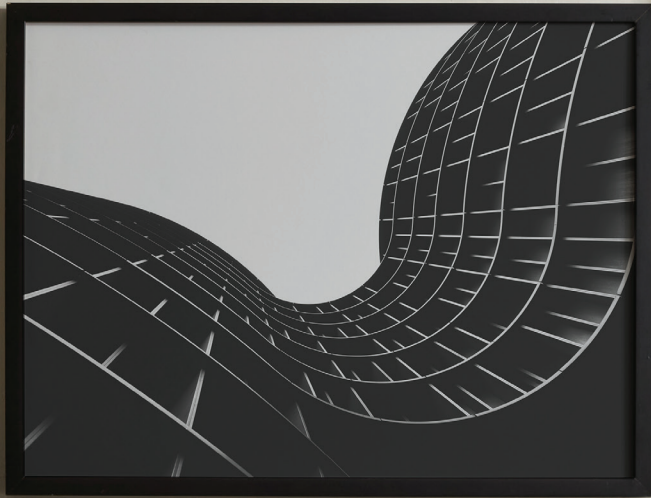


minted.

FINE ART BY
INDEPENDENT ARTISTS

2024
LOOKBOOK



COLLECTION 01

New Traditional



a.

- a. **MORNING, SLEEPYHEAD** by Khara Ledonne | b. **BLUE HERON WITH BLOSSOMS** by Stefanie Lane
c. **DELFT BLUE** by Lottie Aldarwish | d. **HUNGARIAN VASE** by Lise Gulassa
e. **CLEMENTINE** by Wendy Keller | f. **MOONLIGHT AND FIREFLIES** by Carol C. Young



b.



c.



d.



e.



f.

COLLECTION 02

Neutral Abstracts



a.

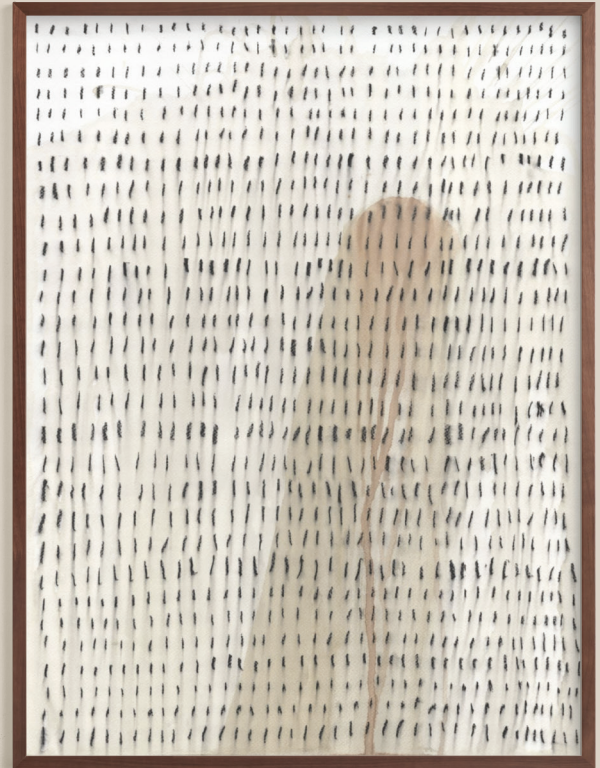


b.

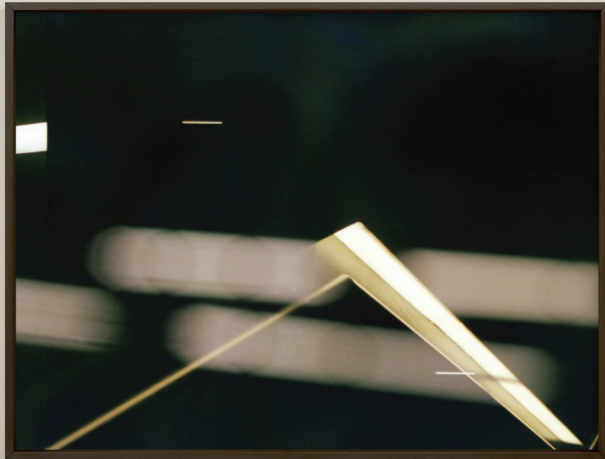
a. **ROOM 3 I** by Shiho Whitehead | b. **ROOM 3 II** by Shiho Whitehead | c. **ORGANIZED CHAOS** by Alisa Galitsyna
d. **EXPERIMENTS WITH FILM 007** by Arash Fattahi Acosta | e. **Rhythm Disrupted** by Luci Power
f. **FIRST GLOW** by Nicoletta Savod | g. **WINTER #1** by Clara Chen



c.



e.



d.



f.



g.

COLLECTION 03

Coastal Nostalgia



a.



b.

a. **JUST OFF THE DOCK I** by Jacquelyn Sloane Siklosn | b. **JUST OFF THE DOCK II** by Jacquelyn Sloane Siklosn
c. **PETALS ON INDIGO** by Deborah Velásquez | d. **SLATE GRAY SEASCAPE** by Caryn Owen
e. **GREY LADY** by Anne Ciotola | f. **ABALONE SHELL** by Amber Purdy | g. **PILVI II** by Jinhee Lee



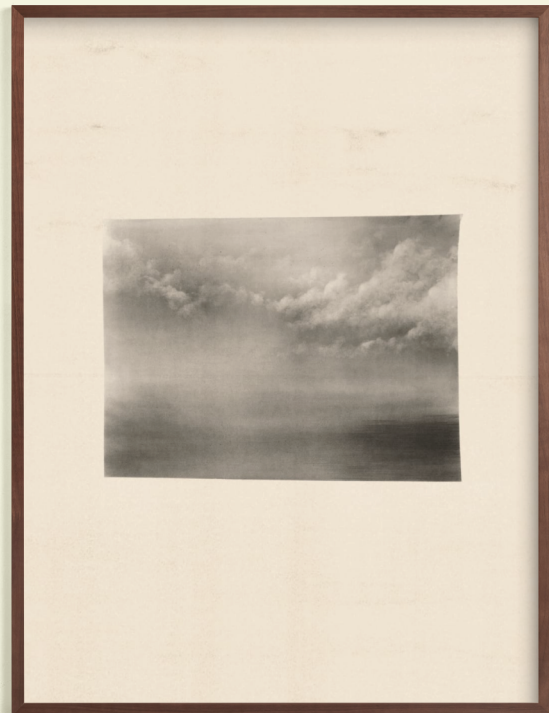
c.



d.



e.



g.



f.

COLLECTION 04

Contemporary



a.



b.

a. PIPES I by weronika sumak | b. PIPES II by weronika sumak

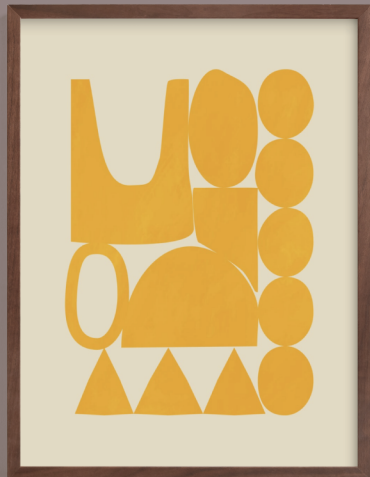
c. UNDERGROUND OPERA by Deborah Velásquez | d. HAPPY PLACE by Beth Vassalo

e. Pixel Plush I by Sweta Modi | f. Pixel Plush II by Sweta Modi

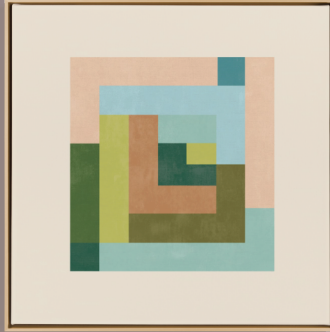
g. FOREVER BLOOMING by Theresa Bear



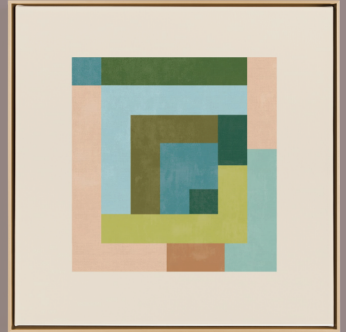
c.



d.



e.



f.



g.

COLLECTION 05

Botanicals

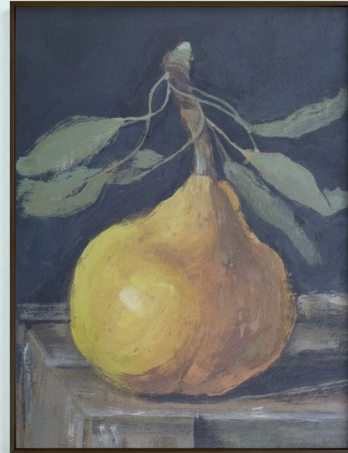


a.

- a. **JUST PEACHY** by Jenny Westenhofer | b. **FLORA** by Kamala Nahas
c. **SPRING DANCE** by Mandy Trimble Leonard | d. **PEAR STILL LIFE** by Rachel Roe
e. **INVENTING A FLOWER** by Karen Kardatzke | f. **COLORFUL VASE** by Lucrecia Caporale



b.



c.



e.



d.



f.

COLLECTION 06

Landscapes



d.

a. **WINTER MIST** by Caryn Owen | b. **Viridian Misty Lake I** by Shina Choi | c. **Viridian Misty Lake II** by Shina Choi
d. **MOODY TREES** by Zani van Zyl | e. **CITY BLUES** by Catalina Somolinos | f. **WIDE OPEN SPACES** by Stacy Kron
g. **MEADOW GLOW** by Kristi Visser | h. **HALFWAY THERE I** by Jess Franks | i. **HALFWAY THERE II** by Jess Franks



b.



c.



d.



e.



f.



g.



h.



i.

Pairs & sets



PALM SPRINGS - A COLOR STUDY I
by Lisa Sundin



PALM SPRINGS - A COLOR STUDY II
by Lisa Sundin



MORNING SHORE I
by Stephanie Goos Johnson



MORNING SHORE II
by Stephanie Goos Johnson



SEA GLASS I
by Kamala Nahas



SEA GLASS II
by Kamala Nahas



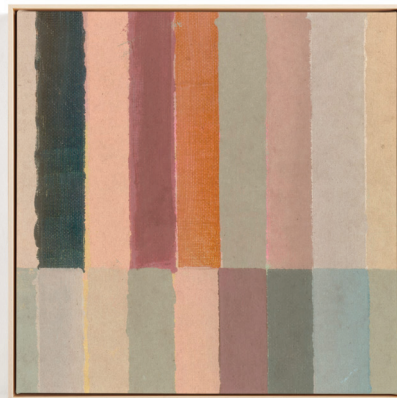
CROSSING LAND I
by Catalina Somolinos



CROSSING LAND II
by Catalina Somolinos



PIANO BARS
by Lindsay Megahed



PIANO BARS II
by Lindsay Megahed

Framing finishes

FRAMED CANVAS



WHITE WOOD



BLACK WOOD



NATURAL WOOD



WALNUT WOOD



BRASS



ROSE GOLD

FRAMED PRINTS



WHITE



LIGHT GRAY



NATURAL



WALNUT



BLACK



GILDED



BRUSHED
SILVER



CHAMPAGNE
SILVER



MATTE
BRASS



GUNMETAL



MATTE BLACK

Formatting options

UNFRAMED PRINT



FRAMED PRINT



Unframed prints are available as full bleed, or printed with a white border.

UNFRAMED CANVAS



FRAMED CANVAS



MODERN FRAMELESS



Mounting options

STANDARD



Full Bleed

Maximizes the image size by stretching the artwork to the edges.

Great for displaying contemporary photography, intricately detailed art, and abstract paintings.



White Border

Allows for self-matting or gives artwork a faux-matted look.

Great for scaling down bold artwork, and can feature an artist signature for projects that benefit from highlighting the local artist community.

PREMIUM



Matting

Artwork matted using 4-ply, archival, museum-grade mat board in 100% cotton.

This traditional display works well with paintings, or any art that is centralized on the paper, as it provides a double frame effect for the work and draws the eye inward.



Float Mounting

Artwork that floats on top of archival, museum-grade mat board in 100% cotton.

This dramatic display elevates sketches and figure drawings, print-making techniques (like block prints), photography, and watercolors.

Sizes

TO SCALE

16" x 20"

16" x 16"

30" x 30"

24" x 24"

40" x 54"

30" x 40"

18" x 24"

24" x 30"



Size and scale are approximate. Pricing shown reflects baseline retail pricing for a standard framed art print.

Framed prints, framed canvas, and Modern Frameless art are available in all sizes, excluding 48" x 70" for Modern Frameless art.

44" x 60"

48" x 70"

44" x 44"



minted.

minted.com | minted.com/trade

8 a.m. - 5 p.m. PT M-F

747 Front Street, suite 200, San Francisco, California 94111



DESIGN TRADE PROGRAM

Purchasing art for a client or business? We offer complimentary art proposals for any project, and local artist recommendations upon request. Learn more about Minted's trade program for interior design professionals at minted.com/trade

FRONT COVER: Shepaug Banks by Stephanie Goos Johnson, Flock by Yohaku Oshima, Dunes No.1 by Little Valley Studio, Sketches after cat II by Catalina Somolinos, Sketches after cat IV by Catalina Somolinos, A quilt for Sonia D by Erin McCluskey Wheeler, Inventing a Flower by Karen Kardatzke, Linjer 1 by Kate Baird, You Got This by Elliot Stokes, Strata by Ashley Armistead ACROSS THE POND by Lindsay Megahed.

BACK COVER: Under the Surface II by Weronika Sumak